

HOUSE LAYOUTS

Functional elegance in interiors

OCTOBER / NOVEMBER 2001

Rs 50

FEATURING • Ketan Sheth • Helal Patel • Mustafa Eisa

Special

Rising Dampness
KitchenMall 2001 - A Report

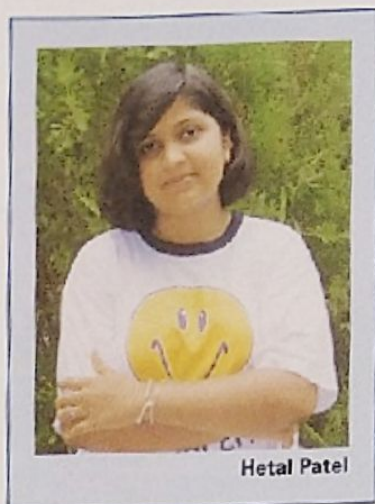
Wallpaper

An alternative to paint!





The living room, note the details on the false ceiling and the TV unit with carvings in marble and wood-no dearth of materials and ideas in this room!



Hetal Patel

“What do you do when your client wants you to design a traditional, rich (if ostentatious), residence for them?” asks Hetal Patel and answers to her own question, “Create a look which reflects their needs, for they live in this environment and should feel comfortable there.” At an age when girls have fun and friends, Hetal spends time running between her various sites in and around Mumbai.

Hetal, a young but successful designer trained from Rachana, has designed a house, rich in detail and traditional to the core with no cost bars!

A 2200 sqft house in Ghatkopar for a Marwari client, this was one of her earlier project, but a much-appreciated one thanks to the workmanship and detailing work. “Jay Shah, my colleague, helped me in the designing part of the project. I go into the nuances of each design and workout the best possible alternative.” Explains Hetal about her USP.

The entrance door is traditional with marble and wood moulding. Instead of the traditional double door, they have used a wrought iron grill that is fixed and the oval part can be opened by itself from inside. The carpet like inlay work is the highlight of the entrance foyer with stripes of marble used to create the right effect of a carpet! The dining area is close to the door with the kitchen door also opening from the foyer. “The clients wanted a wash near the dining, which was nearly impossible as it would have spoiled the look of the foyer. So we had a basin incorporated which could be closed while not in use, with the help of hinges. Plumbing lines were effectively camouflaged by the shoe rack below the basin.” Explains Hetal. The ceiling is another interesting feature in oval form going with the oval on the kitchen door, with wood mouldings running through their length. The Jharooka as soon as you enter, houses the God of the family. The kitchen door which opens from the foyer, is partly in glass and wood. The glass portion has strips of glass stuck on it

FACT FILE

Area of residence: 2200 sqft

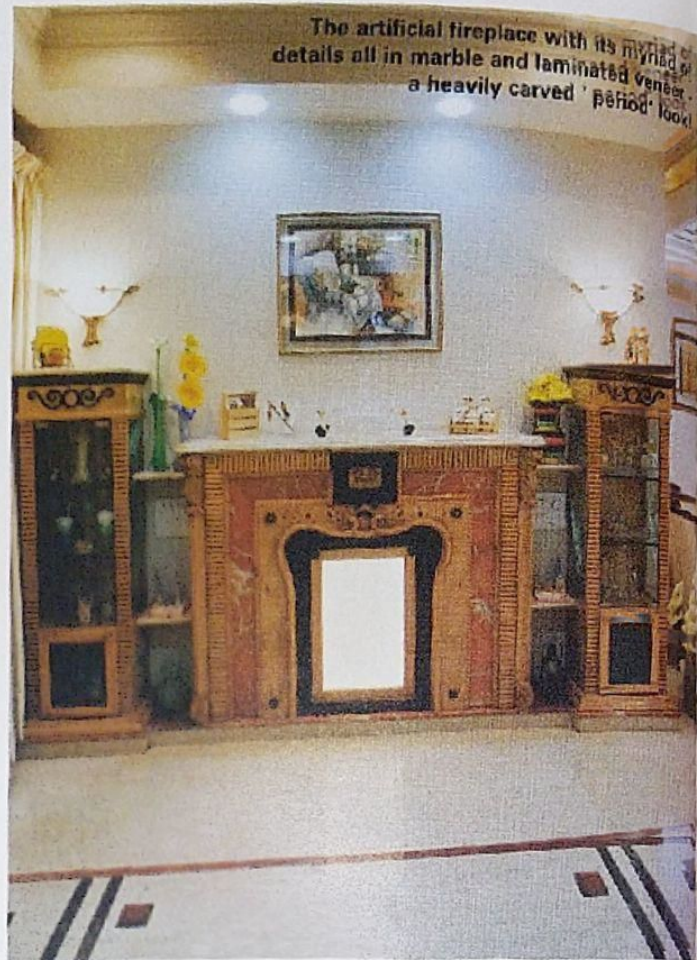
Duration of project: 5 months

Interior Designer: Hetal Patel

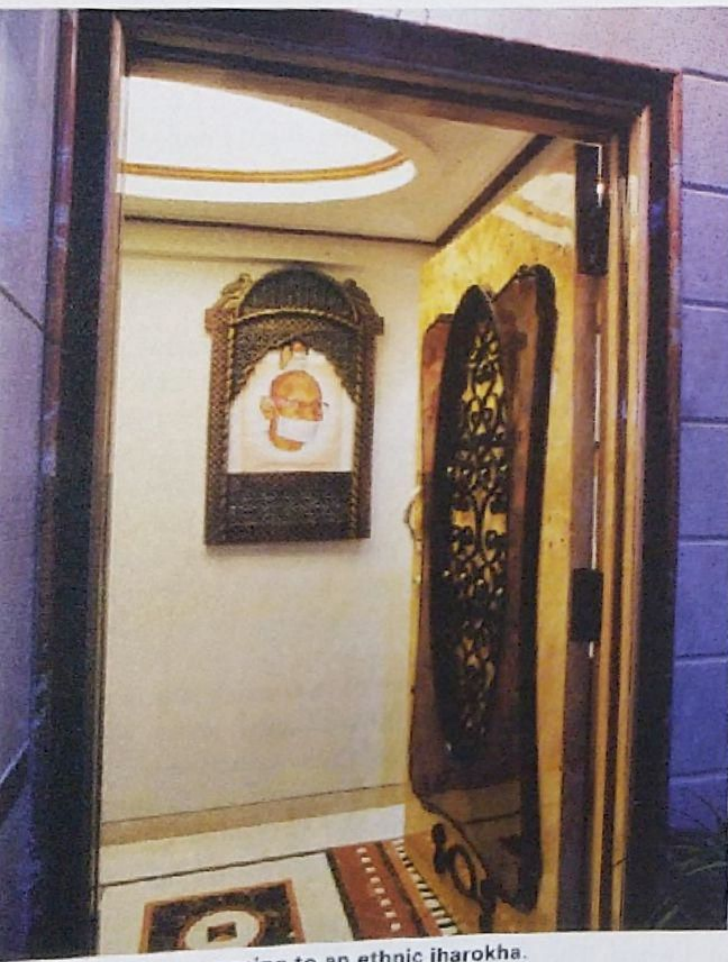
Telephone: 5111321



The dining area with wrought iron, cane and glass combination. The accessories add colour to the otherwise somber ambience.



The artificial fireplace with its myriad details all in marble and laminated veneer, a heavily carved 'period' look.



The entrance door opening to an ethnic jharokha.

with chemicals that gives it an uneven surface and an interesting look. The dining table is in wrought iron with glass top and cane work on the sides. A fireplace is artificially created here which doubles up as a serving counter with provision for keeping cutlery on the sides. A closer look at the fireplace reveals the details incorporated in it. The heavy carving on the sides, the rope carving running through the sides, the alternate usage of marble and veneer in three colours to create depth, all this gives this piece a period furniture look.

The entire flooring is in Italian marble in Palazzo Sissilia with tickles in Emperrado Red fire. The ceiling is fully false with diffused lights everywhere, down to the servant's room.

The T.V unit in the living area, in laminated buff venner and mouldings in marble, gives the area an imposing look; the wall behind is also highlighted by the use of two shades of burl veneers. The upholstered sofas were all made to order by the designer's own team and adds to the serene, if grandiose, appearance of the room.

"The kitchens always attract a lot of attention," says Hatel proudly. The kitchen in this house is sober and well planned with all the facilities incorporated. "We have used maple wood and given a laminated finish." The tickles are in Italian marble. The flooring and the counter top is in black granite. The beech and blue colour scheme is soothing to the eye. "The beam running through the center of the kitchen was an eye sore, which we effectively